

Regent College London FZ LLC (RCL) Information

Regent College London FZ LLC offers Technical and Vocational Education and Training (TVET) to the next generation of learners in the UAE. RCL's continuous innovation and tech-enabled approach towards TVET education allows a diverse range of learners to truly advance in their chosen careers in global market.

RCL is located in a modern purpose-built campus in Dubai Knowledge Park (DKP) offering innovative career pathways in various in-demand fields of study. RCL not only focuses on providing globally recognized education but also strives to instil a growth mindset in all learners via the RCL transformational programme 'Thinking into Character' which can empower them to truly scale great heights in any career.

"At Regent College London, the end result of education is character"

Technical and Vocational Education and Training (TVET)

RCL believes in education and training that holds relevance and accreditation in today's market and beyond. Our technical and vocational education and training arm focuses primarily in providing real-world, practical and professional skills as a pathway into the workforce or universities worldwide.

Vocational training courses at RCL cover a wide spectrum of industries such as Business, Computing, and Information Technology (IT). These courses cover more industry-oriented professional skills with minimal emphasis on theory-based knowledge and non-traditional learning outcomes. It boosts practical application and employs a 'learn-by-doing' approach, giving learners the relevant technical skills sought after by recruiters worldwide. Our awarding bodies ensure these qualifications provide the highest recognition of learner skills and employability on a global scale.

Vocational and technical education is a great platform for Emirati learners who aspire to succeed but experience challenges with academic studies. An efficient, flexible training system helps young Emiratis build their vocational skills to have a flourishing career.

Thinking into Character (TiC)

TiC is a suite of transformational learning programmes that instil a high growth mindset and develop leadership qualities. Spearheaded by Dr. Selva Pankaj, CEO and co-Founder of Regent Group, attendees will obtain a deep insight into professional & personal achievement, wealth creation, wellbeing and continuous success, and self-fulfilment.

TiC is built on the philosophies & teachings of world leading experts like Andrew Carnegie, Napoleon Hill, Bob Proctor and many more.

Benefits of this programme include:

- Learn how to identify, set and achieve inspiring goals
- Improve your self-image and re-write your life script
- Close the gap between your intentions and your actions
- Understand how to turn non-productive habits into productive habits
- Overcome challenges and barriers to success
- Develop your leadership qualities

Teaching Learning Assessment Curriculum Continuum (TLACC)

RCL 's Teaching Learning Assessment Curriculum Continuum (TLACC) environment supports learners' development.

The TLACC strategy demonstrates how RCL is committed to providing teaching, learning and assessment of the highest possible quality. This is rooted in RCL 's core values which include the personal development of both staff and learners through the concept of Thinking into Character (Ed.Tic). Excellence is also underpinned by the promotion of scholarship in learning and teaching by academic staff. The strategy aims to foster a community of best practice in delivery and learning approaches.

RCL core values extend to supporting access and participation through the delivery of TVET courses driving Equality, Diversity, Inclusion and Belonging (EDIB) for our learning community. RCL ensures that all learners have the choice of delivery formats to suit their needs. The RCL community

will be enhanced by these values throughout a learner's time with us and beyond by developing a rich and active alumni society.

Principles underpinning the strategy

The Strategy is underpinned by the following principles:

- I. Quality of the learning experience and the quality of outcomes underpinned by excellent continuation, progression and completion of learners.
- II. The quality of the learner experience and its importance to the reputation of RCL and to attracting and retaining our learners.
- III. Delivering quality learning and teaching is at the heart of a learners experience.
- IV. Quality outcomes demonstrate learners' progression in their study and the design of assessment methods clearly demonstrate the achievement of those outcomes.
- V. Increased use of technologies, especially for online and on demand delivery.
- VI. RCL ensures accessibility so that its diverse population of learners are given the support they need to enable their access to high-quality learning materials in different formats. RCL enables learners to cross the digital divide to benefit from technology enhanced learning experiences in the classroom, virtually and increasingly in and preparing for the world of work.
- VII. Access, Equality and Diversity is at the forefront of RCL activities to ensure we support learners from diverse backgrounds. New approaches to course design and the enhancement of processes support this.

Why Regent College London FZ LLC ?

Digital 100% Paperless Campus

The RCL campus is set up on a tech-based and paperless strategy set out by the Dubai government. 100% of internal processes are digitized through smart Edu-tech infrastructures and virtual learning environments.

Innovative courses

A wide range of career growth and enhancement courses that emphasize on personal growth, high achievement mentality and superior management skills.

Affordability

We ensure our courses are reasonably priced and follow a fee structure that makes Regent Institute Middle East affordable for every household.

Global recognition

Our partnerships with leading global awarding bodies help learners gain worldwide distinction and recognition for their skills and expertise.

Growth mindset

Regent Institute Middle East has a strong focus on personal growth and accelerate professional success of our learners. Our learner base are not only technically skilled but also possess strong high-achieving character to realise their career goals.

Practical education

Our 100% practical learning model helps learners develop key technical skills that are sought after by employers worldwide.

Inspiring learner life

Modern learning spaces with excellent facilities and support services provides an enjoyable and reflective study environment on and off campus.

Quality Framework

RCL have in place a robust Quality Assurance framework

Quality assurance is:

- ✓ at the heart of what we do at RCL
- ✓ how we ensure the quality and standard of our provision and assessment. We use quality assurance to:
 - ✓ ensure that staff, Internal Verifiers and Assessors are standardised and supported
 - ✓ check that all programmes are working to the required standards
 - ✓ identify and provide support where it is needed in order to safeguard certification
 - ✓ recognise and support good practice
 - ✓ facilitate a high-quality learning experience for learners to enable high achievement

The Quality Assurance Model we operate is a robust quality management system that demonstrates we are committed to quality in everything we do.

It is a system designed to ensure that assessment methods are fit for purpose and that the assessment decisions made by our Academic Assessors are valid, reliable and consistent with qualification criteria for achievement.

Regular monitoring takes place across the provision in line with the requirements of the regulator and the awarding bodies as well as our own internal QA expectations. Every quarter we conduct a 'Self Evaluation' and 'Self-Assessment' and update a living Self Evaluation Document (SED). We undertake this to assure key

stakeholders that we take very seriously the quality of our provision and are compliant with the standards set by the regulator(s) and the awarding body(s).

We encourage learners to be active participants in their learning and ask for their feedback at frequent intervals so we can enhance their experience and ensure they are able to fulfil their learning goals.

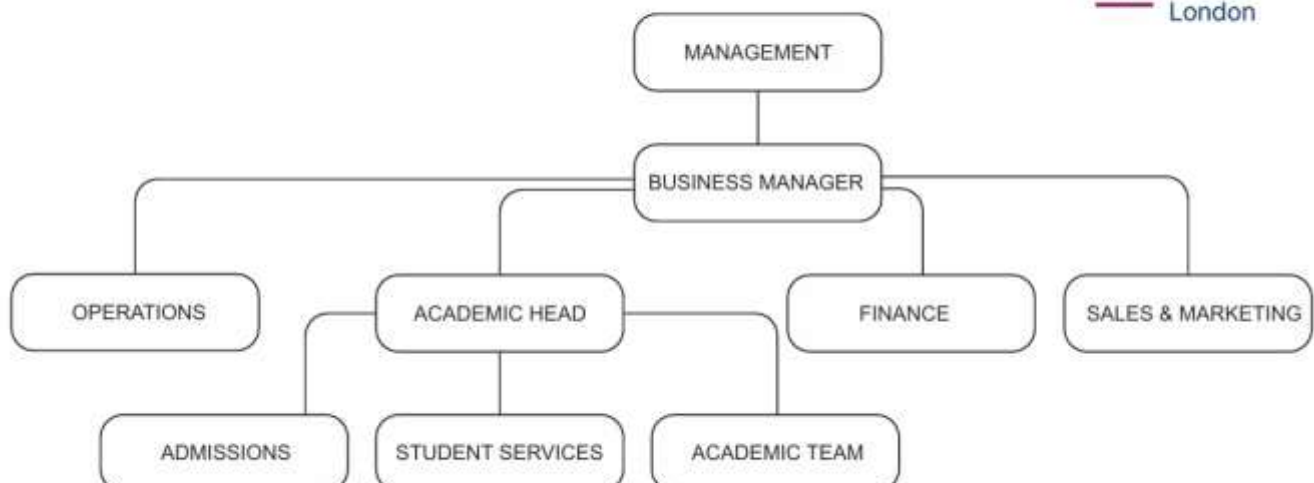
Governance Framework

The RCL governance framework is based on agreed principles such as:

- accountability→being answerable for decisions and having meaningful mechanisms in place to ensure the agency adheres to all applicable standards
- transparency/openness→having clear roles and responsibilities and clear procedures for making decisions and exercising power
- integrity→acting impartially, ethically and in the interests of the agency, and not misusing information acquired through a position of trust
- ✓ efficiency→ensuring the best use of resources to further the aims of the organisation, with a commitment to evidence-based strategies for improvement
- ✓ leadership→achieving an agency-wide commitment to good governance through leadership from the top.

Organizational chart

RCL FZ LLC - The organogram



Policy Information

| Purpose | Policy Information |
|------------------|--|
| Title | RCL Information and Organisational Chart |
| Document Number | 0169/51 |
| Purpose | The purpose of this policy is to ensure that standardization practices across all the academic department of Regent Institute Middle East. |
| Audience | Staff, Learners |
| Category | Compliance |
| Next review date | March, 2026 |

Version Control

| Version | Author | Amended by | Date | Comments |
|---------|--------|------------|-----------|--|
| 1.01 | DoS | DGS | 18/3/2024 | Policy approved by RCL Governance Committee |
| 2.01 | AH | QAC | 20/3/2025 | Policy approved by RCL Quality Assurance Committee |
| | | | | |
| | | | | |
| | | | | |
| | | | | |
| | | | | |